

EC 900

The lattice-boom crane for heavier loads or extended reach



sparrows

- Max On-Board Load 83 US tons (75 tonnes)
- Boom lengths from 80ft - 180ft (24.4m - 54.8m)
- Designed/Manufactured under API 2C



API 2C-0072



sparrows
MANUFACTURING

EC 900

The lattice-boom crane for heavier loads or extended reach



Energy Cranes EC 900 is a proven machine developed from the popular Titan T12000.

Designed to withstand arduous service on substantial manned offshore installations and drilling rigs, in a typical 120ft (36.6m) boom configuration, the EC 900 delivers 60.5 US tons (55 tonnes) on-board and 40 US tons (36 tonnes) off-board load capability at 40ft (12.2m) radius.



Designed and manufactured under API 2C-0072 6th edition, the EC900 can be configured to optimize the on-board and off-board capacity by utilizing the established methods within API 2C.



Rotating Structure

The reinforced base plate, to which the bearing and gearbox are bolted, virtually eliminates shock-load and, in consequence, extends bearing life. The symmetrical superstructure avoids localised stress. Continuous 360° swing control is delivered through two heavy duty hydraulic planetary drives, with static and dynamic brakes, mounted to the ball ring so as to facilitate ease of inspection/maintenance of all retaining bolts.

Boom & Load Control

64" x 64" (1.95m x 1.95m) cross-section lattice booms are available from 80 to 180 ft in length. A jib extension accommodates the auxiliary hoist line/sheave. Boom, main and auxiliary hoist control comes from hydraulic planetary hoists equipped with counter-balance valves for power load-lowering. Automatic spring-applied hydraulic release brakes and ratchet/pawls are fitted. Boom suspension is of the pendant line/bridle type. Backstops, kick-outs and Anti-2-Block are standard.

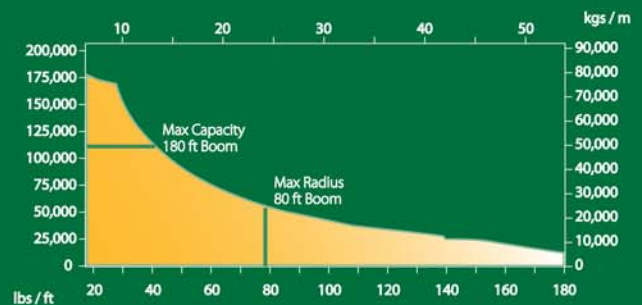


Operator's Cab

The 'full vision' cab is fully enclosed and fitted with shatter-resistant glass. Hydraulic controls have dead-man failsafe and there are pressure gauges for each pump. The cab control panel includes prime mover controls/gauges.

Options

- Power Units
- Load Indicator Systems
- Electrical Equipment
- Load Hoists
- Whip Extension/Hoist
- Rigging
- Pedestal Adapters
- Hydraulic Systems
- Cold Weather Materials



Sparrows Manufacturing

Headquarters: 10235 West Little York, Suite 100, Houston, Texas 77040, USA Tel: +1 832 467 7300 Fax: +1 832 467 7390

Crane Manufacturing: Northwinds Operations Center, 6707 Northwinds Drive, Houston, Texas 77041, USA Tel: +1 713 896 0002 Fax: +1 713 896 5130

International operations: Brazil, Nigeria, Angola, UK, Netherlands, Azerbaijan, Abu Dhabi, Singapore, Indonesia, Australia

www.sparrowsgroup.com

