

# EC 750

The sophisticated mid-range pedestal crane for offshore service



**sparrows**



- Max On-Board Load 78 US tons (71 tonnes)
- Boom lengths from 60ft - 140ft (18.3m - 42.7m)
- Designed/Manufactured under API 2C



API 2C-0072



**sparrows**  
MANUFACTURING

# EC 750

The sophisticated mid-range pedestal crane for offshore service



Energy Cranes EC 750 is a proven machine developed from the Titan T6800 series.

The EC 750 is designed to withstand the rigours of intensive round-the-clock operation on substantial manned offshore installations and drilling rigs. In a typical 100ft boom configuration, the EC 750 delivers 39 US tons (35 tonnes) on-board and 26 US tons (23 tonnes) off-board load capability at 35ft (10.7m) radius.

Designed and manufactured under API 2C 6th edition, the EC750 can be configured to optimize the on-board and off-board capacity by utilizing the established methods within API 2C.



## Rotating Structure

The reinforced base plate, to which the bearing and gearbox are bolted, virtually eliminates shock-load deflection and, in consequence, extends bearing life. The symmetrical superstructure avoids localised stress. A 75" (1.9m) single ball swing bearing. Continuous 360° swing control is delivered through four heavy duty hydraulic planetary drives, with static and dynamic brakes.

## Boom & Hoist Control

59" x 59" (1.5m x 1.5m) cross section lattice booms are available from 60 to 140 ft (18.3-42.7m) in length. A jib extension accommodates the auxiliary hoist line/sheave. Boom, main and auxiliary hoist control is through hydraulic planetary hoists equipped with counter-balance valves for power load-lowering. Automatic spring-applied hydraulic release brakes and ratchet/pawls are fitted. Boom suspension is of the pendant line/bridle type. Backstops, kick-outs and Anti-2-Block are standard.

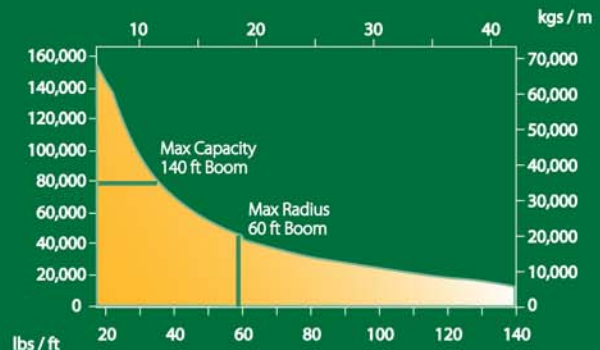


## Operator's Cab

The 'full vision' cab is fully enclosed and fitted with shatter-resistant glass. Hydraulic controls have dead-man failsafe and there are pressure gauges for each pump. The cab control panel includes prime mover controls/gauges.

## Options

- Power Units
- Load Indicator Systems
- Electrical Equipment
- Load Hoists
- Whip Extension/Hoist
- Rigging
- Pedestal Adapters
- Hydraulic Systems
- Cold Weather Materials



## Sparrows Manufacturing

Headquarters: 10235 West Little York, Suite 100, Houston, Texas 77040, USA Tel: +1 832 467 7300 Fax: +1 832 467 7390

Crane Manufacturing: Northwinds Operations Center, 6707 Northwinds Drive, Houston, Texas 77041, USA Tel: +1 713 896 0002 Fax: +1 713 896 5130

International operations: Brazil, Nigeria, Angola, UK, Netherlands, Azerbaijan, Abu Dhabi, Singapore, Indonesia, Australia

[www.sparrowsgroup.com](http://www.sparrowsgroup.com)

