

# EC 650

The simple lattice boom main-plus-auxiliary hoist crane for everyday offshore service

  
**sparrows**

- Max On-Board Load 44 US tons (40 tonnes)
- Boom lengths from 60ft - 120ft (18.3m - 36.6m)
- Designed/Manufactured under API 2C



API 2C-0072

  
energycranes

  
**sparrows**  
MANUFACTURING

# EC 650

The simple lattice boom main-plus-auxiliary hoist crane for everyday offshore service



The EC 650 is a rugged, simple lattice-boom crane for all-round lifting work on offshore platforms and rigs.

Based on the successful Titan T5400, the EC 650 in typical 100 ft boom length lifts 44 US tons (40.2 tonnes) static at 15 ft radius and 16 US tons (14.4 tonnes) dynamic at 40 ft (12.2m) radius.

Designed and manufactured under API 2C 6th edition, the EC650 can be configured to optimize the on-board and off-board capacity by utilizing the established methods within API 2C.



## Rotating Structure

The reinforced base plate, to which the slew bearing and gearbox are bolted, virtually eliminates deflection, thereby extending bearing life.

A 65" (1.65m) single ball swing bearing. Continuous 360° swing control is delivered through a single hydraulic swing drive, with static and dynamic brakes, all externally mounted for ease of inspection.

## Boom & Load Control

48" x 48" (1.23m x 1.23m) cord and lattice booms are available from 60 to 120 ft (18.3-36.6m) in length. A jib extension accommodates the auxiliary hoist line/sheave. Boom, main and auxiliary hoist control comes from hydraulic planetary hoists equipped with counter-balance valves for power load-lowering. Automatic spring-applied hydraulic release brakes and ratchet/pawls are fitted. Boom suspension is of the pendant line/bridle type. Backstops, kick-outs and Anti-2-Block are standard.

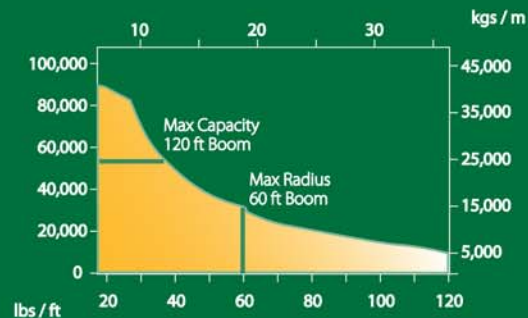


## Operator's Cab

The standard 'full vision' cab is fully enclosed and fitted with shatter-resistant glass. Hydraulic controls have dead-man failsafe and there are pressure gauges for each pump. The cab control panel includes prime mover controls/gauges.

## Options

- Power Units
- Load Indicator Systems
- Electrical Equipment
- Load Hoists
- Whip Extension/Hoist
- Rigging
- Pedestal Adapters
- Hydraulic Systems
- Cold Weather Materials



## Sparrows Manufacturing

Headquarters: 10235 West Little York, Suite 100, Houston, Texas 77040, USA Tel: +1 832 467 7300 Fax: +1 832 467 7390

Crane Manufacturing: Northwinds Operations Center, 6707 Northwinds Drive, Houston, Texas 77041, USA Tel: +1 713 896 0002 Fax +1 713 896 5130

International operations: Brazil, Nigeria, Angola, UK, Netherlands, Azerbaijan, Abu Dhabi, Singapore, Indonesia, Australia

[www.sparrowsgroup.com](http://www.sparrowsgroup.com)

