

# EC 65

The high-end box-boom for heavier loads or extended reach



**sparrows**

- Max On-board Load 95 US tons (86.2 tonnes)
- Boom lengths from 40-100ft (12.2-30.5m)
- Designed/Manufactured under API 2C



API 2C-0072



**sparrows**  
MANUFACTURING

# EC 65

The high-end box-boom for heavier loads or extended reach



Energy Cranes EC65 is a proven machine developed from the popular American Aero Bay-Master 65.

Designed to withstand arduous service on substantial manned offshore installations and drilling rigs, in a typical 80ft (24.4m) boom configuration, the EC65 delivers 23 US tons (22.6 tonnes) on-board and 16.5 US tons (15 tonnes) off-board load capability at 30ft (9.1m) radius.

Designed and manufactured under API 2C-6th edition, the EC65 can be configured to optimize the on-board and off-board capacity by utilizing the established methods within API 2C.

## Rotating Structure

The reinforced base plate, to which the bearing, gearbox, and luffing cylinders are bolted, virtually eliminates shock-load and, in consequence, extends bearing life. The symmetrical superstructure avoids localised stress. Continuous 360° swing control is delivered through two heavy duty hydraulic planetary drives, with static and dynamic brakes, mounted to the ball ring so as to facilitate ease of inspection/maintenance of all retaining bolts.



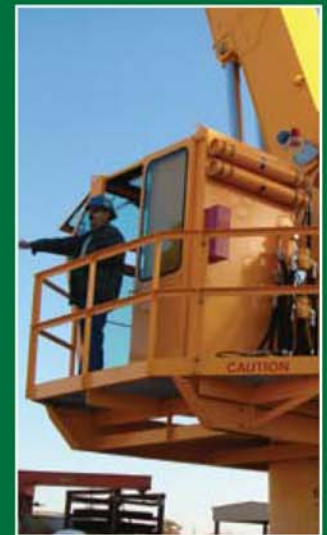
## Boom & Load Control

Box Booms are available from 40-100ft (12.2-30.5m) in length. A jib extension accommodates the auxiliary hoist line/sheave. Boom luffing cylinders equipped with counter-balance valves are utilized to control the boom position. Main and auxiliary hoist control comes

from hydraulic planetary hoists equipped with counter-balance valves for power load-lowering. Automatic spring-applied hydraulic release brakes and ratchet/pawls are fitted. Safety kick-outs such as Anti-2-Block are standard.

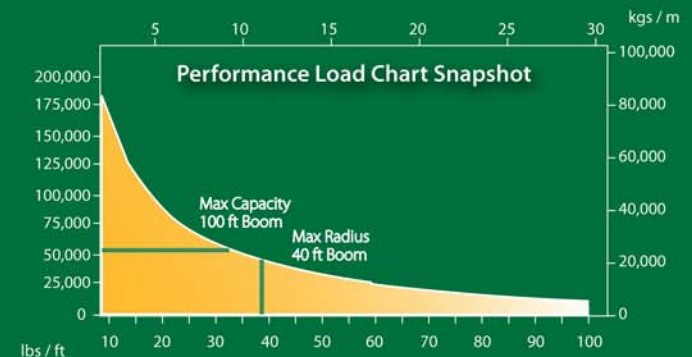
## Operator's Cab

The 'full vision' cab is fully enclosed and fitted with shatter-resistant glass. Hydraulic controls have dead-man failsafe and there are pressure gauges for each pump. The cab control panel includes prime mover controls/gauges.



## Options

- Power Units
- Load Indicator Systems
- Electrical Equipment
- Load Hoists
- Whip Extension/Hoist
- Rigging
- Pedestal Adapters
- Hydraulic Systems
- Cold Weather Materials



## Sparrows Manufacturing

Headquarters: 10235 West Little York, Suite 100, Houston, Texas 77040, USA Tel: +1 832 467 7300 Fax: +1 832 467 7390

Crane Manufacturing: Northwinds Operations Center, 6707 Northwinds Drive, Houston, Texas 77041, USA Tel: +1 713 896 0002 Fax: +1 713 896 5130

International operations: Brazil, Nigeria, Angola, UK, Netherlands, Azerbaijan, Abu Dhabi, Singapore, Indonesia, Australia

[www.sparrowsgroup.com](http://www.sparrowsgroup.com)

