

EC 20

The Light Duty / Low Maintenance Box-Boom for
Unmanned single caisson structures



sparrows

- Max On-board Load 12.5 US tons (10 tonnes)
- Boom lengths from 20-40 ft (6.1-12.2m)
- Designed/Manufactured under API 2C



API 2C-0072



sparrows
MANUFACTURING

EC 20

The Light Duty / Low Maintenance Box-Boom for Unmanned single caisson structures



Energy Cranes EC20 is a proven machine developed from the popular Titan 5B.

Designed to withstand arduous service on substantial manned offshore installations and drilling rigs, in a typical 30ft (9.1m) boom configuration, the EC20 delivers 12,200 lbs (5.5 tonnes) on-board and 8,100 lbs (3.7 tonnes) off-board load capability at 10ft (3m) radius.

Designed and manufactured under API 2C-6th edition, the EC20 can be configured to optimize the on-board and off-board capacity by utilizing the established methods within API 2C.

Rotating Structure

The reinforced base plate, to which the bearing, gearbox, and luffing cylinders are bolted, virtually eliminates shock-load and, in consequence, extends bearing life. The symmetrical superstructure avoids localised stress. Continuous 360° swing control is delivered through two heavy duty hydraulic planetary drives, with static and dynamic brakes, mounted to the ball ring so as to facilitate ease of inspection/maintenance of all retaining bolts.



Boom & Load Control

Box Booms are available from 20 to 40 ft (6.1-12.2m) in length. A jib extension accommodates the auxiliary hoist line/sheave. A boom luffing cylinder, equipped with a counter-balance valve is utilized to control the boom position. Main and auxiliary hoist control comes



from hydraulic planetary hoists equipped with counter-balance valves for power load-lowering. Automatic spring-applied hydraulic release brakes and ratchet/pawls are fitted. Safety kick-outs such as Anti-2-Block are standard.

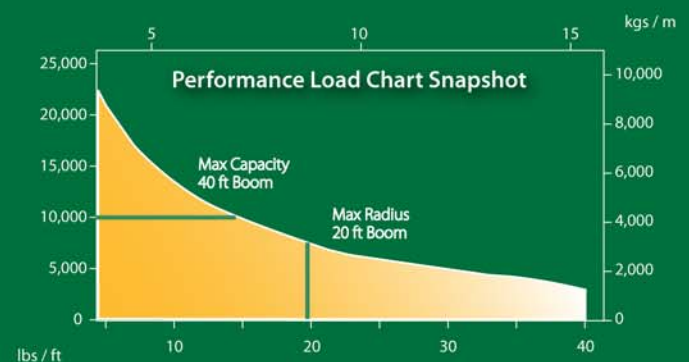
Operator's Station

An operator's station can be mounted on the body (walk-around) or remote based on the project requirements. Hydraulic controls have dead-man failsafe and there are pressure gauges for each pump. The control panel includes prime mover controls/gauges.



Options

- Power Units
- Load Indicator Systems
- Electrical Equipment
- Load Hoists
- Whip Extension/Hoist
- Rigging
- Pedestal Adapters
- Hydraulic Systems
- Cold Weather Materials



Sparrows Manufacturing

Headquarters: 10235 West Little York, Suite 100, Houston, Texas 77040, USA Tel: +1 832 467 7300 Fax: +1 832 467 7390

Crane Manufacturing: Northwinds Operations Center, 6707 Northwinds Drive, Houston, Texas 77041, USA Tel: +1 713 896 0002 Fax +1 713 896 5130

International operations: Brazil, Nigeria, Angola, UK, Netherlands, Norway, Azerbaijan, Abu Dhabi, Singapore, Indonesia, Australia

www.sparrowsgroup.com



EC 20

The Light Duty / Low Maintenance Box-Boom for Unmanned single caisson structures



Energy Cranes EC20 is a proven machine developed from the popular Titan 5B.

Designed to withstand arduous service on substantial manned offshore installations and drilling rigs, in a typical 30ft (9.1m) boom configuration, the EC20 delivers 12,200 lbs (5.5 tonnes) on-board and 8,100 lbs (3.7 tonnes) off-board load capability at 10ft (3m) radius.

Designed and manufactured under API 2C-6th edition, the EC20 can be configured to optimize the on-board and off-board capacity by utilizing the established methods within API 2C.

Rotating Structure

The reinforced base plate, to which the bearing, gearbox, and luffing cylinders are bolted, virtually eliminates shock-load and, in consequence, extends bearing life. The symmetrical superstructure avoids localised stress. Continuous 360° swing control is delivered through two heavy duty hydraulic planetary drives, with static and dynamic brakes, mounted to the ball ring so as to facilitate ease of inspection/maintenance of all retaining bolts.



Boom & Load Control

Box Booms are available from 20 to 40 ft (6.1-12.2m) in length. A jib extension accommodates the auxiliary hoist line/sheave. A boom luffing cylinder, equipped with a counter-balance valve is utilized to control the boom position. Main and auxiliary hoist control comes

from hydraulic planetary hoists equipped with counter-balance valves for power load-lowering. Automatic spring-applied hydraulic release brakes and ratchet/pawls are fitted. Safety kick-outs such as Anti-2-Block are standard.

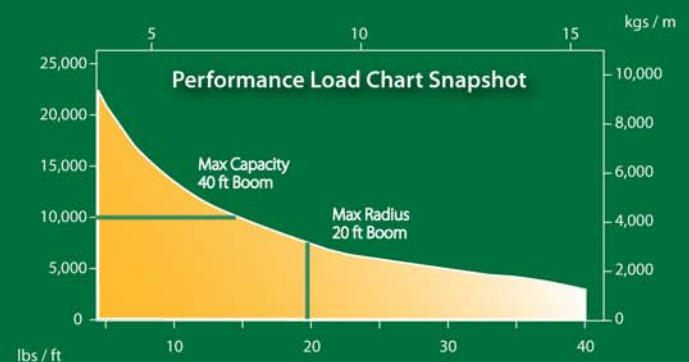
Operator's Station

An operator's station can be mounted on the body (walk-around) or remote based on the project requirements. Hydraulic controls have dead-man failsafe and there are pressure gauges for each pump. The control panel includes prime mover controls/gauges.



Options

- Power Units
- Load Indicator Systems
- Electrical Equipment
- Load Hoists
- Whip Extension/Hoist
- Rigging
- Pedestal Adapters
- Hydraulic Systems
- Cold Weather Materials



Sparrows Manufacturing

Headquarters: 10235 West Little York, Suite 100, Houston, Texas 77040, USA Tel: +1 832 467 7300 Fax: +1 832 467 7390

Crane Manufacturing: Northwinds Operations Center, 6707 Northwinds Drive, Houston, Texas 77041, USA Tel: +1 713 896 0002 Fax +1 713 896 5130

International operations: Brazil, Nigeria, Angola, UK, Netherlands, Norway, Azerbaijan, Abu Dhabi, Singapore, Indonesia, Australia

www.sparrowsgroup.com

