

# EC12K Crane

Small Crane. Big Confidence



sparrows



API 2C-0072



sparrows  
MANUFACTURING

# EC12K Crane

Small Crane. Big Confidence



With boom lengths from 10 to 30 feet and payloads up to two US Tons, EC12K cranes are perfect for moderate offshore lifting applications. Fully compliant with the latest API 2C crane specification the EC12K is field-proven to help optimize operational and safety performance.

## Small Payloads. Big Payoffs

Cost-effective for small-scale mechanical handling, the EC12K is built for tough service on manned or unmanned offshore installations and drilling rigs. In a typical 10-foot boom configuration, it delivers 4,000 lbs on-board and off-board capability at maximum radius (0 degree boom angle).

## Operator's Station

The EC12K's operator station can be configured for specific project needs with the controls mounted on the body or remote-based. Hydraulic controls are dead-man fail-safe type with gauge to show system pressures.

## Power and Control

- Diesel engine
- Manual or Electric (12 or 24V) starter options
- Hydraulic gear pump
- Hydraulic gear reducer and pinion swing drive
- On-board fuel/hydraulic tank capacity
- Get enough power for your application, without overspending

## Performance

- Braden BG6 winch lifting at minimum 40 FPM per API Spec 2C
- Boom lift at 60 seconds over full range of boom positions
- Full 360 degree rotation of crane at 1 – 1.5 RPM

## Safety Systems and Rigging

- Three-ton overhaul ball with built-in load hook
- Hydraulic Anti-2 Block system
- Wire rope sized for minimum 5:1 safety factor per API 2C
- Stainless Steel Load Chart and Boom Angle indicator located on crane
- Exhaust Guard for engine to protect Operators

## Durable Dependable Structure

- Boom built from A500 Steel Tubing, with A572 components
- Body built using A500 Steel Tubing, with A572 components
- Pedestal built using A106 Pipe

## Robust Rotating Upper Structure

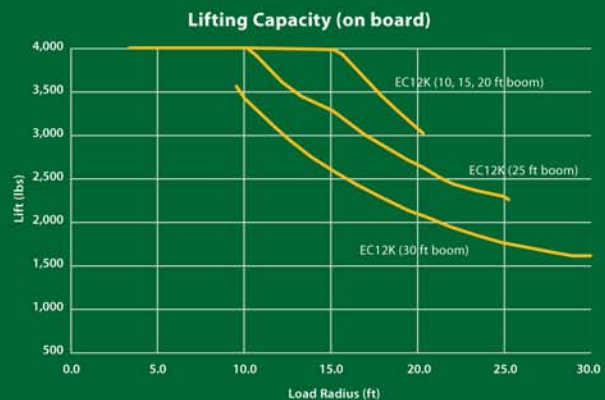
- Kingpost system for simplicity, ease of assembly and service
- Rotation pads easily adjusted and replaced if necessary

## Corrosion Protection

- All structural steel components seal welded for corrosion protection
- All structural steel components galvanized for long life
- Mechanical components painted to EC paint specification
- All rotation & support pins built using stainless steel
- Grease ports installed for all rotating parts

## Customizable Options

- Custom boom lengths available 10-30 foot range
- Pedestal height easily adjusted for each project
- Remote Operator Control Station
- Remote Hydraulic Power Unit
- Certified for personnel lifting per API Spec 2C



## Sparrows Manufacturing

Headquarters: 10235 West Little York, Suite 100, Houston, Texas 77040, USA Tel: +1 832 467 7300 Fax: +1 832 467 7390

Crane Manufacturing: Northwinds Operations Center, 6707 Northwinds Drive, Houston, Texas 77041, USA Tel: +1 713 896 0002 Fax +1 713 896 5130

International operations: Brazil, Nigeria, Angola, UK, Netherlands, Norway, Azerbaijan, Abu Dhabi, Singapore, Indonesia, Australia

[www.sparrowsgroup.com](http://www.sparrowsgroup.com)

