

EC 1200

The lattice-boom crane for extreme loads & operating conditions



sparrows

- Max On-board Load 312 US tons (283 tonnes)
- Boom lengths from 80ft - 220ft (24.4m - 67.1m)
- Designed/Manufactured under API 2C



API 2C-0072



sparrows
MANUFACTURING

EC 1200

The lattice-boom crane for extreme loads & operating conditions



Energy Cranes EC1200 is a proven machine developed from the popular Titan T16000.

Designed to withstand arduous service on substantial manned offshore installations and drilling rigs, in a typical 140ft (42.7m) boom configuration, the EC1200 delivers 136 US tons (124 tonnes) on-board and 91 US tons (82.3 tonnes) off-board load capability at 40ft (12.2m) radius.

Designed and manufactured under API 2C-6th edition, the EC1200 can be configured to optimize the on-board and off-board capacity by utilizing the established methods within API 2C.

Rotating Structure

The reinforced base plate, to which the bearing and gearbox are bolted, virtually eliminates shock-load and, in consequence, extends bearing life. The symmetrical superstructure avoids localised stress. Continuous 360° swing control is delivered through two heavy duty hydraulic planetary drives, with on-board and off-board brakes, mounted to the ball ring so as to facilitate ease of inspection/maintenance of all retaining bolts.

Boom and Load Control



Up to 85" x 85" (2.16 x 2.16m) cross section lattice booms are available from 80-220 ft (24.4-67.1m) in length. A jib extension accommodates the auxiliary hoist line/sheave. Boom, main and auxiliary hoist control comes from hydraulic planetary hoists equipped with counter-balance valves for power load-lowering. Automatic spring-

applied hydraulic release brakes and ratchet/pawls are fitted. Boom suspension is of the pendant line/bridle type. Backstops, kick-outs and Anti-2-Block are standard.

Boom Luffing

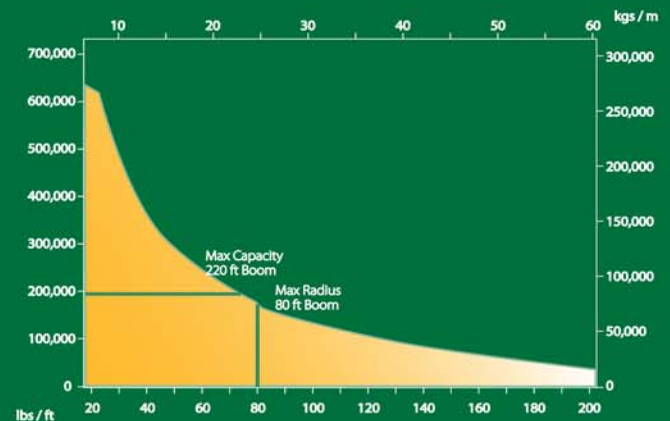
Boom Luffing and Load Hoisting are through hydraulic planetary hoists equipped with counter-balance valves for power load-lowering. Automatic spring-applied hydraulic release brake and ratchet/pawls are fitted. Boom suspension is of the pendant line/bridle type. Spring rubber boom backstops, high boom-angle kick-out and Anti-2-Block are standard.

Operator's Cab

The 'full vision' cab is fully enclosed and fitted with shatter-resistant glass. Hydraulic controls have dead-man failsafe and there are pressure gauges for each pump. The cab control panel includes prime mover controls/gauges.

Options

- Power Units
- Load Indicator Systems
- Electrical Equipment
- Load Hoists
- Whip Extension/Hoist
- Rigging
- Pedestal Adapters
- Hydraulic Systems
- Cold Weather Materials



Sparrows Manufacturing

Headquarters: 10235 West Little York, Suite 100, Houston, Texas 77040, USA Tel: +1 832 467 7300 Fax: +1 832 467 7390

Crane Manufacturing: Northwinds Operations Center, 6707 Northwinds Drive, Houston, Texas 77041, USA Tel: +1 713 896 0002 Fax: +1 713 896 5130

International operations: Brazil, Nigeria, Angola, UK, Netherlands, Azerbaijan, Abu Dhabi, Singapore, Indonesia, Australia

www.sparrowsgroup.com

