

EC 1100

The high performer for heavier loads or deepwater operations



sparrows

- Max On-Board Load 220 US tons (199 tonnes)
- Boom lengths from 100ft - 200ft (30.5m - 61m)
- Designed/Manufactured under API 2C



API 2C-0072



sparrows
MANUFACTURING

EC 1100

The high performer for heavier loads or deepwater operations



Energy Cranes EC 1100 is a proven design introduced in 2005 as a development of the earlier American Aero OM2200.

The EC 1100 meets the requirement for an offshore pedestal crane with 220 US tons (199 tonnes) close-radius performance balanced by a useful 58 US ton (53 tonnes) off-board lift capacity at nominal 50 ft (15.25 m) radius. The EC 1100 is in particular demand for large Tension Leg Platforms (TLPs), SPARs and lift boats.

Designed and manufactured under API 2C-0072 6th edition, the EC1100 can be configured to optimize the on-board and off-board capacity by utilizing the established methods within API 2C.

Rotating Structure

The heavy-duty welded-steel base plate supports the swing bearing and gear box. A 109" (2.77m) three-row roller swing bearing is standard. Continuous 360° swing control is delivered through heavy duty hydraulic planetary drives, with static and dynamic brakes.



Boom and Load Control

74" x 74" (1.88 x 1.88m) cross-section lattice booms are available from 100ft - 200ft (30.5m - 61m) in length.

Boom Luffing

Boom Luffing and Load Hoisting are through hydraulic planetary hoists equipped with counter-balance valves for power load-lowering. Automatic spring-applied hydraulic release brake and ratchet/pawls are fitted. Boom suspension is of the pendant line/bridle type. Spring rubber boom backstops, high boom-angle kick-out and Anti-2-Block are standard.

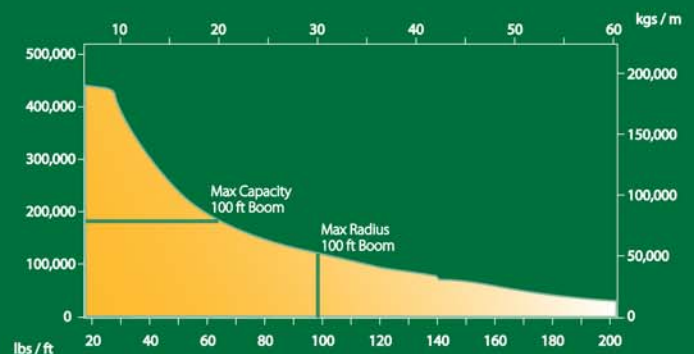


Operator's Cab

The standard 'full vision' cab is fully enclosed and fitted with shatter-resistant glass. Hydraulic controls have dead-man failsafe and there are pressure gauges for each pump. The cab control panel includes prime mover controls/gauges.

Options

- Power Units
- Load Indicator Systems
- Electrical Equipment
- Load Hoists
- Whip Extension/Hoist
- Rigging
- Pedestal Adapters
- Hydraulic Systems
- Cold Weather Materials



Sparrows Manufacturing

Headquarters: 10235 West Little York, Suite 100, Houston, Texas 77040, USA Tel: +1 832 467 7300 Fax: +1 832 467 7390

Crane Manufacturing: Northwinds Operations Center, 6707 Northwinds Drive, Houston, Texas 77041, USA Tel: +1 713 896 0002 Fax: +1 713 896 5130

International operations: Brazil, Nigeria, Angola, UK, Netherlands, Azerbaijan, Abu Dhabi, Singapore, Indonesia, Australia

www.sparrowsgroup.com

